

REV.	ECN NO.	LOCATIONS	DESCRIPTION	DATE	DESIGN
A1			MODIFY LAYOUT PAD	02/28'17	Orlando

ORDERING INFORMATION

FHZ1015-XX (XX R)

① PRODUCT SERIES:

ZIF FPC/FFC Connector  
Pitch 1.0mm/ Height 1.5mm.

② NUMBER OF CONTACTS:

04 TO 30

CUSTOMER DRAWING

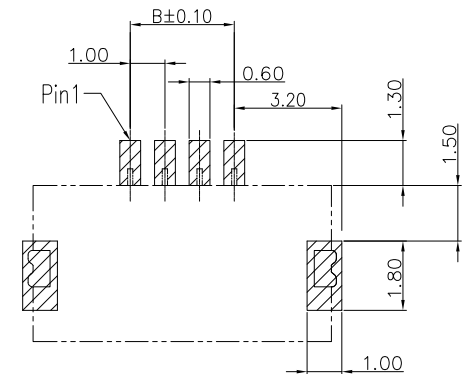
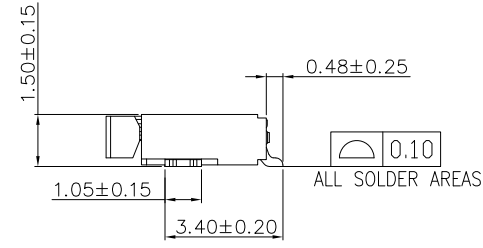
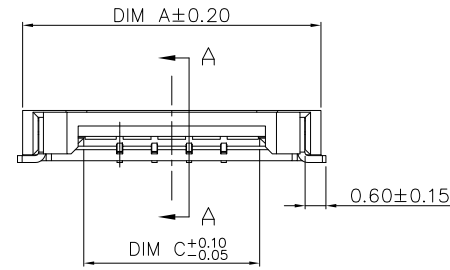
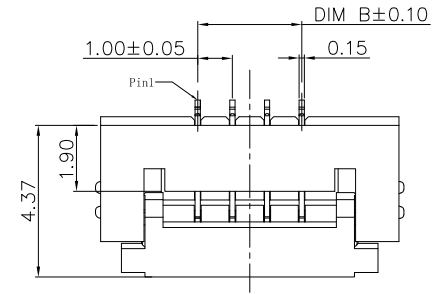
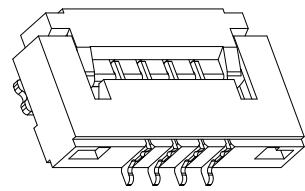
RoHS Compliant

③ PLATING:

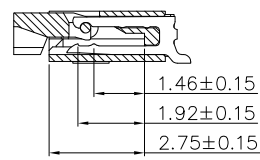
11: Tin plating.

21: Gold plating.

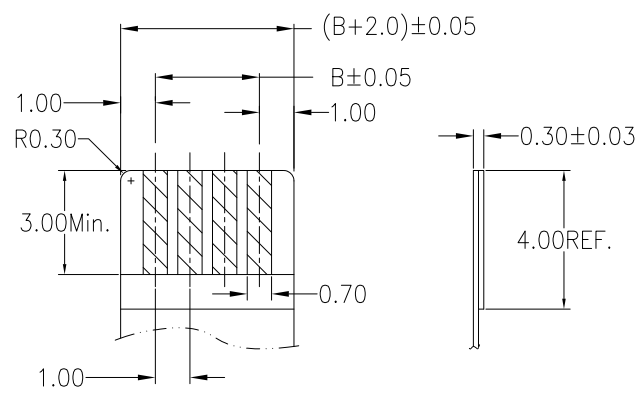
3D VIEW



Recommended P.C.B Layout  
TOLERANCE:±0.05



SECTION A-A  
CABLE INSERT DIM.



APPLICABLE FPC/FFC  
TOLERANCE:±0.05

Table 1:

PIN	DIM A	DIM B	DIM C	PIN	DIM A	DIM B	DIM C
04	8.60	3.00	5.06	18	22.60	17.00	19.06
05	9.60	4.00	6.06	19	23.60	18.00	20.06
06	10.60	5.00	7.06	20	24.60	19.00	21.06
07	11.60	6.00	8.06	21	25.60	20.00	22.06
08	12.60	7.00	9.06	22	26.60	21.00	23.06
09	13.60	8.00	10.06	23	27.60	22.00	24.06
10	14.60	9.00	11.06	24	28.60	23.00	25.06
11	15.60	10.00	12.06	25	29.60	24.00	26.06
12	16.60	11.00	13.06	26	30.60	25.00	27.06
13	17.60	12.00	14.06	27	31.60	26.00	28.06
14	18.60	13.00	15.06	28	32.60	27.00	29.06
15	19.60	14.00	16.06	29	33.60	28.00	30.06
16	20.60	15.00	17.06	30	34.60	29.00	31.06
17	21.60	16.00	18.06				

DIM	TOL
x	±0.25
x.x	±0.20
x.xx	±0.10
x.xxx	±0.05

Note:

- Material
  - 1.1: Housing: High Temperature plastic,UL94V-0.
  - 1.2: Actuator: High Temperature plastic,UL94V-0.
  - 1.3: Contact: Phosphor Bronze .
  - 1.4: Fit: Phosphor Bronze.
- Plating
  - 2.1: Contact: Tin/Gold flash over Nickel on contact area  
Tin/Gold flash over Nickel on solder area.
  - 2.2: Fit: Tin plated on Nickel overall.

SUNFUN SUNFUN TECHNOLOGY LTD				
DRAW NO.	FHZ1015(A1)	DATE	MATERIAL: SEE NOTES	DRAW NAME:
DESIGN:	Orlando	02/28'17	FINISH: SEE NOTES	FPC CONN- FRONT COVER Pitch 1.0mm/ 1.5mm H
CHECK:	Orlando	02/28'17	FILE: FHZ1015(A1)	MODEL: 1.0 FPC CONN
REVIEW:	Yale	02/28'17	P/N: FHZ1015-XX(XXR)	UNIT: SHEET:
APPROVED	Yale	02/28'17	REV. A1 SCALE	mm 1/1