

REV.	ECN NO.	LOCATIONS	DESCRIPTION	DATE	DESIGN
A0			NEW RELEASE	07/03'12	Jim

**ORDERING INFORMATION**

**FHZ1020 - XX (XX R)**

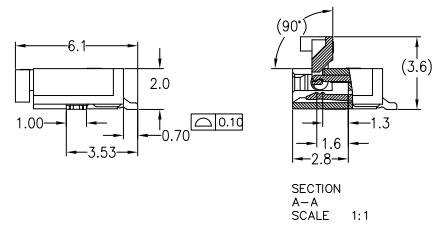
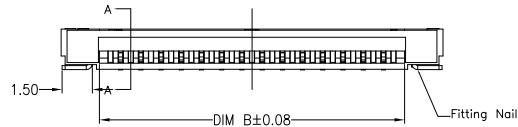
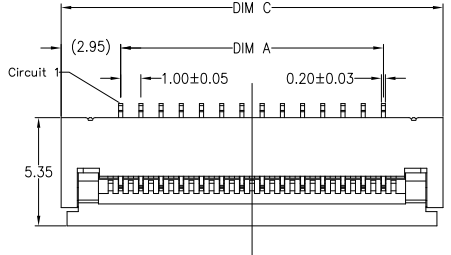
① ② ③

① **PRODUCT SERIES:**  
ZIF FPC/FFC CONNECTOR-  
PITCH 1.0MM/ 2.0MM HEIGHT

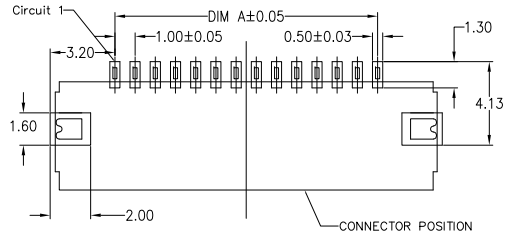
**CUSTOMER DRAWING**

**RoHS Compliant**

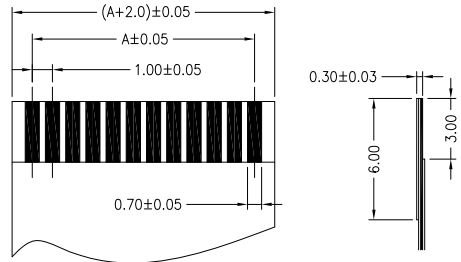
② **NUMBER OF CONTACTS:**  
04 TO 30  
④ **PLATING:**  
11: Tin Plating  
21: Gold Plating



CKT	A	B	C	CKT	A	B	C
4	3.00	5.06	8.90	18	17.00	19.06	22.90
5	4.00	6.06	9.90	19	18.00	20.06	23.90
6	5.00	7.06	10.90	20	19.00	21.06	24.90
7	6.00	8.06	11.90	21	20.00	22.06	25.90
8	7.00	9.06	12.90	22	21.00	23.06	26.90
9	8.00	10.06	13.90	23	22.00	24.06	27.90
10	9.00	11.06	14.90	24	23.00	25.06	28.90
11	10.00	12.06	15.90	25	24.00	26.06	29.90
12	11.00	13.06	16.90	26	25.00	27.06	30.90
13	12.00	14.06	17.90	27	26.00	28.06	31.90
14	13.00	15.06	18.90	28	27.00	29.06	32.90
15	14.00	16.06	19.90	29	28.00	30.06	33.90
16	15.00	17.06	20.90	30	29.00	31.06	34.90
17	16.00	18.06	21.90				



P.C.B. LAYOUT



PROPER CABLE

**Note:**

1. Material
  - 1.1: Housing: High Temperature plastic, UL94V-0.
  - 1.2: Actuator: High Temperature plastic, UL94V-0.
  - 1.3: Contact: Copper Alloy.
  - 1.4: Fit: Copper Alloy.
2. Plating
  - 2.1: Contact: Tin or Gold plated over Nickel on contact area.  
Tin plated over Nickel on solder area.
  - 2.2: Fit: Tin plated over Nickel.
3. Rating:
  - 3.1: Operating Voltage: 30V AC/DC.
  - 3.2: Current Rating: 0.4A AC/DC.
  - 3.3: Operating Temperature: -40°C~+85°C.

DIM	TOL	DIM	TOL
X	±0.40	X'	±4.0'
X.X	±0.30	X.X'	±3.0'
X.XX	±0.20	X.XX'	±2.0'
X.XXX	±0.10	X.XXX'	±1.0'

<b>SUNFUN</b>		<b>SUNFUN TECHNOLOGY LTD</b>			
DRAW NO.	FHZ1020(A0)	DATE	MATERIAL: SEE NOTES	DRAW NAME:	
DESIGN:	Jim	07/03'12	FINISH: SEE NOTES	FPC CONN- FRONT COVER	
CHECK:	Jim	07/03'12	FILE: FHZ1020(A0)	Pitch 1.0mm/ 2.0mm H	
REVIEW:	Eric	07/03'12	P/N: FHZ1020-XX(XXR)	MODEL: P1.0 FPC CONN	
APPROVED	Eric	07/03'12	REV. A0 SCALE	UNIT: mm	SHEET: 1/1

