

REV.	ECN NO.	LOCATIONS	DESCRIPTION	DATE	DESIGN
A1			MODIFY DIMENSION NOTES	04/16'21	Orlando

**CUSTOMER DRAWING**

**RoHS Compliant**

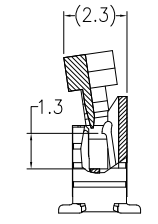
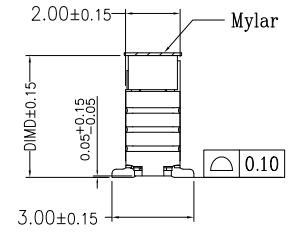
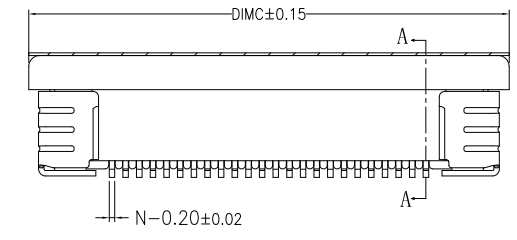
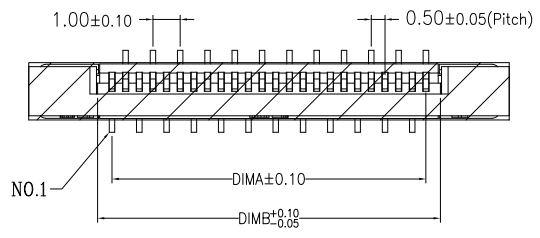
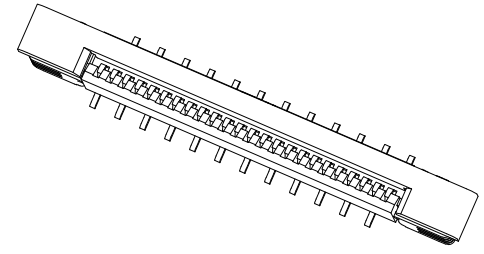
ORDERING INFORMATION  
**FVZ0550 - XX (11 R)**  
 ① ② ③

① **PRODUCT SERIES**  
 FPC/FFC CONN- Drawer type  
 Vertical / Pitch 0.5mm

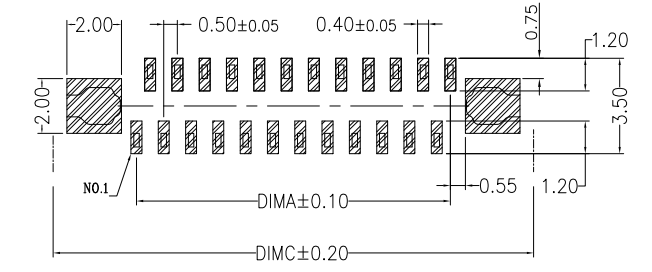
② **NUMBER OF CONTACTS**  
 04 TO 60

③ **PLATING & PACKING**  
 11 : Tin plated

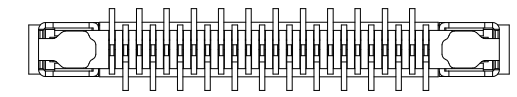
3D VIEW



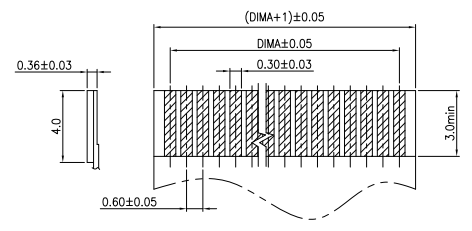
SECTION A-A



RECOMMENDED P.C.B LAYOUT



PIN NO	DIM A	DIM B	DIM C	DIM D
04	1.50	2.56	7.60	4.45
06	2.50	3.56	8.60	
07	3.00	4.06	9.10	
08	3.50	4.56	9.60	
09	4.00	5.06	10.10	
10	4.50	5.56	10.60	
12	5.50	6.56	11.60	
14	6.50	7.56	12.60	
15	7.00	8.06	13.10	
16	7.50	8.56	13.60	
18	8.50	9.56	14.60	
20	9.50	10.56	15.60	
22	10.50	11.56	16.60	
24	11.50	12.56	17.60	
25	12.00	13.06	18.10	
26	12.50	13.56	18.60	
28	13.50	14.56	19.60	
30	14.50	15.56	20.60	
32	15.50	16.56	21.60	
34	16.50	17.56	22.60	
36	17.50	18.56	23.60	
40	19.50	20.56	25.60	
42	20.50	21.56	26.60	
45	22.00	23.06	28.10	
50	24.50	25.56	30.60	
54	26.50	27.56	32.60	
60	29.50	30.56	35.60	5.00



RECOMMENDED FPC/FFC DIMENSION

Note:

1. Material
  - 1.1: Housing: High Temperature plastic, UL94V-0.
  - 1.2: Actuator: High Temperature plastic, UL94V-0.
  - 1.3: Contact: Copper Alloy.
  - 1.4: Fit: Copper Alloy.
2. Plating
  - 2.1: Contact: Tin plated over Nickel on contact area.  
Tin plated over Nickel on solder area.
  - 2.2: Fit: Tin plated over Nickel.

<b>SUNFUN</b>		<b>SUNFUN TECHNOLOGY LTD</b>			
DRAW NO.	FVZ0550(A1)	DATE	MATERIAL: SEE NOTES		DRAW NAME:
DESIGN:	Orlando	04/16'21	FINISH: SEE NOTES		FPC/FFC CONN- Drawer type Vertical / Pitch 0.5mm
CHECK:	Orlando	04/16'21	FILE: FVZ0550(A1)		MODEL: P0.5 FPC CONN
REVIEW:	John	04/16'21	P/N: FVZ0550-XX(11R)		UNIT: SHEET:
APPROVED	John	04/16'21	REV. A1	SCALE	mm 1/1

DIM	TOL
X	±0.25
X.X	±0.20
X.XX	±0.10
X.XXX	±0.05

