

REV.	ECN NO.	LOCATIONS	DESCRIPTION	DATE	DESIGN
A1			REVISED SOME DETAILS	04/21'18	Hank

**ORDERING INFORMATION**

**MCCF - R1K3 (XX T)**

① ② ③

**① PRODUCT SERIES:**

USB C TYPE connector -  
Receptacle (Female) side.

**② ITEM NO.:**

Right Angle- Single Row SMD 16pin  
Sink1.6/ Body 6.5L

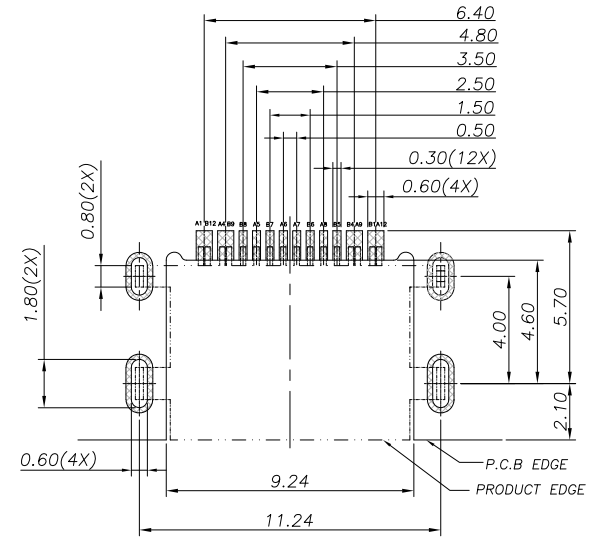
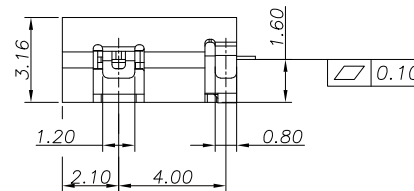
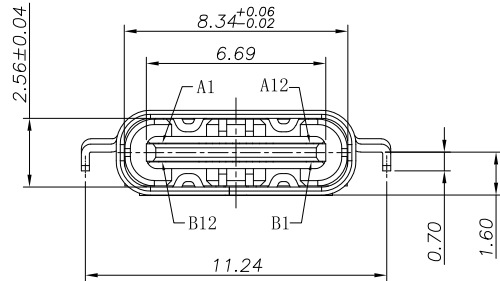
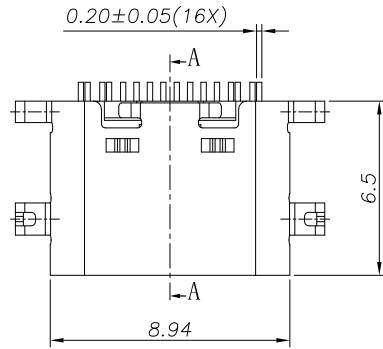
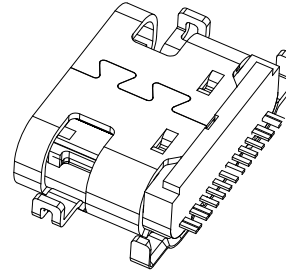
**CUSTOMER DRAWING**

**RoHS Compliant**

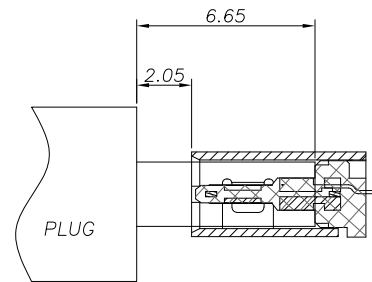
**③ GOLD PLATING :**

03: 3u"  
15: 15u"  
30: 30u"

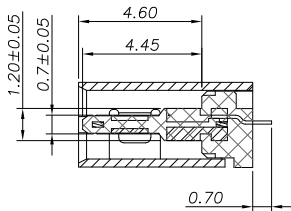
3D VIEW



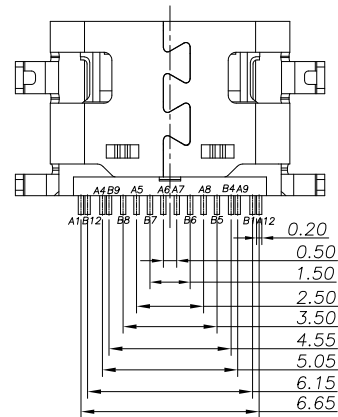
RECOMMENDED P.C.B. LAYOUT



AFTER MATING



SECTION:A-A



**PIN ASSIGNMENTS**

PIN NO.	A1	A4	A5	A6	A7	A8	A9	A12
SIGNAL NAME	GND	VBUS	CC1	Dp1	Dn1	SBU1	VBUS	GND
PIN NO.	B12	B9	B8	B7	B6	B5	B4	B1
SIGNAL NAME	GND	VBUS	SBU2	Dn2	Dp2	CC2	VBUS	GND

DIM	TOL
X.X	±0.30
X.XX	±0.20
X.XXX	±0.10

**NOTES:**

- MATERIAL:
  - HOUSING: HIGH TEMP plastic, UL94 V-0.
  - CONTACT: COPPER ALLOY.
  - MID PLATE: STAINLESS STEEL.
  - SHELL: STAINLESS STEEL.
- PLATED:
  - CONTACT: GOLD ON CONTACT AREA OVER NICKEL PLEATED OVERALL.
  - SHELL: NICKEL PLATED OVERALL.
  - MID PLATE: CLEAR ONLY

SUNFUN		SUNFUN TECHNOLOGY LTD			
DRAW NO.	MCCF-R1K3(A1)	DATE	04/21'18	MATERIAL:	SEE NOTES
DESIGN:	Hank	04/21'18	FINISH:	SEE NOTES	DRAW NAME:
CHECK:	Hank	04/21'18	FILE:	MCCF-R1K3(A1)	USB C Type CONN - FEMALE
REVIEW:	Rui	04/21'18	P/N:	MCCF-R1K3(XXT)	Right Angle- Single Row SMD 16pin
APPROVED	Rui	04/21'18	REV. A1	SCALE	MODEL: USB C TYPE CONN
					UNIT: mm
					SHEET: 1/1