

REV.	ECN NO.	LOCATIONS	DESCRIPTION	DATE	DESIGN
A0			NEW RELEASE	10/09'18	Hank

**ORDERING INFORMATION**

**MCCF - R1K7 (XX T)**

- ① **PRODUCT SERIES:**  
USB C TYPE connector -  
Receptacle (Female) side.
- ② **ITEM NO.:**  
Right Angle- Single Row SMD 16pin  
Sink0.54mm/ Body 6.5L

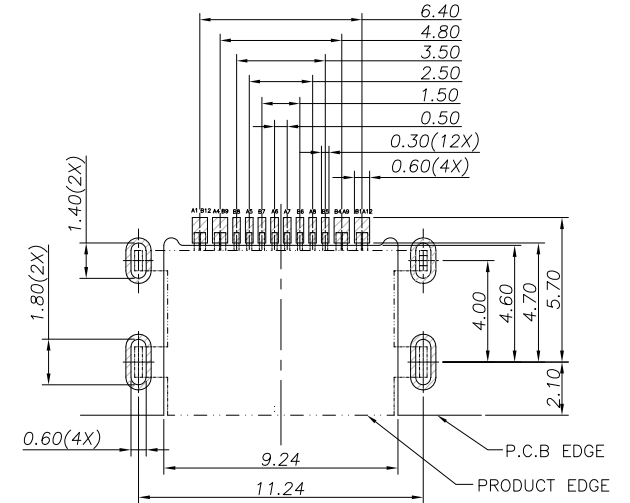
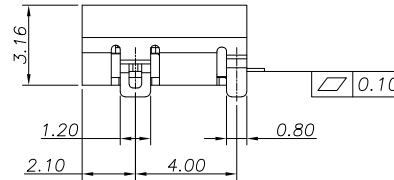
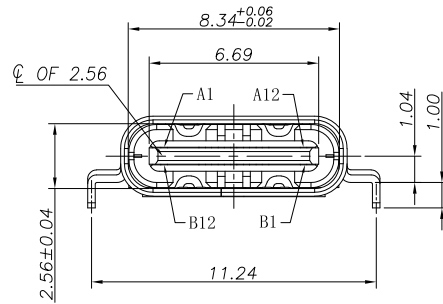
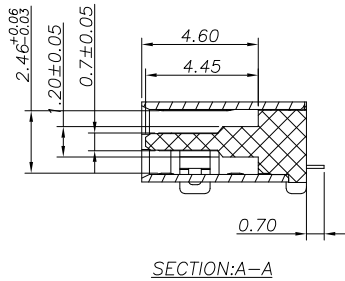
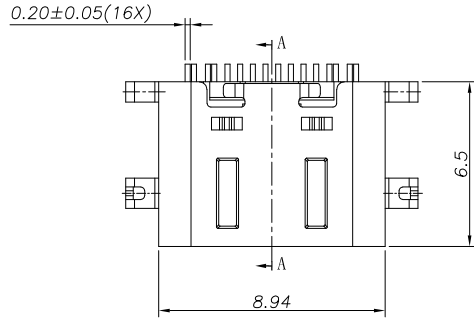
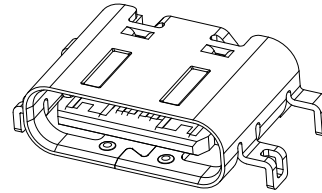
**CUSTOMER DRAWING**

**RoHS Compliant**

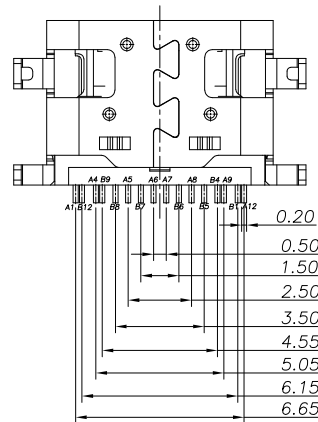
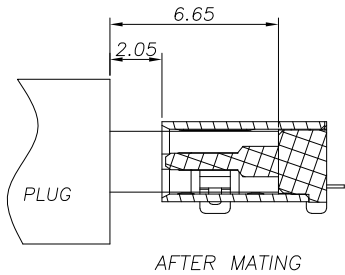
③ **GOLD PLATING :**

- 03: 3u"
- 15: 15u"
- 30: 30u"

3D VIEW



**RECOMMENDED PCB LAYOUT**



**NOTES:**

1. MATERIAL:
  - (1) HOUSING: HIGH TEMP plastic, UL94 V-0.
  - (2) CONTACT: COPPER ALLOY.
  - (3) MID PLATE: STAINLESS STEEL.
  - (4) SHELL: STAINLESS STEEL.
2. PLATED:
  - (1) CONTACT: GOLD ON CONTACT AREA OVER NICKEL PLEATED OVER ALL.
  - (2) SHELL: NICKEL PLATED OVER ALL.
  - (3) MID PLATE: CLEAR ONLY
3. MECHANICAL PERFORMANCE,
  - 3-1.INSERTION FORCE: 0.5~2.0kgf.
  - 3-2.REMOVAL FORCE: 0.8kgf~2.0kgf.
  - 3-3.DURABILITY: 10,000 CYCLES.
4. ELECTRICAL PERFORMANCE,
  - 4-1. CURRENT RATING:3.0A
  - 4-2. VOLTAGE RATING:5.0V
5. ENVIRONMENTAL PERFORMANCE:
  - OPERATING TEMPERATURE: -25°C~+85°C.
6. IR REFLOW:
  - THE PEAK TEMPERATURE ON THE BOARD SHALL BE MAINTAINED FOR 10 SECONDS AT 260°C.

**PIN ASSIGNMENTS**

PIN NO.	A1	A4	A5	A6	A7	A8	A9	A12
SIGNAL NAME	GND	VBUS	CC1	Dp1	Dn1	SBU1	VBUS	GND
PIN NO.	B12	B9	B8	B7	B6	B5	B4	B1
SIGNAL NAME	GND	VBUS	SBU2	Dn2	Dp2	CC2	VBUS	GND

DIM	TOL
X.X	±0.30
X.XX	±0.20
X.XXX	±0.10

<b>SUNFUN</b>		<b>SUNFUN TECHNOLOGY LTD</b>			
DRAW NO.	MCCF-R1K7(A0)	DATE	MATERIAL: SEE NOTES	DRAW NAME:	
DESIGN:	Hank	10/09'18	FINISH: SEE NOTES	USB C Type CONN - FEMALE	
CHECK:	Hank	10/09'18	FILE: MCCF-R1K7(A0)	Right Angle- Single Row SMD 16pin	
REVIEW:	Rui	10/09'18	P/N: MCCF-R1K7(XXT)	Sink0.54 /Body 6.5L	
APPROVED	Rui	10/09'18	REV. A0	SCALE	MODEL: USB C TYPE CONN
				UNIT: mm	SHEET: 1/1