

REV.	ECN NO.	LOCATIONS	DESCRIPTION	DATE	DESIGN
A1			MODIFY THE MOLDING PART	04/08'20	Johnson

ORDERING INFORMATION

MCCF - TS01 (XX T)

① PRODUCT SERIES:
USB C TYPE connector -
Receptacle (Female) side.

② ITEM NO.:

Right Angle- Dual Row SMD 24pin
2Dip with Post / Srew Wing type

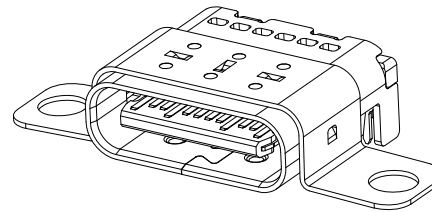
CUSTOMER DRAWING

RoHS Compliant

③ GOLD PLATING :

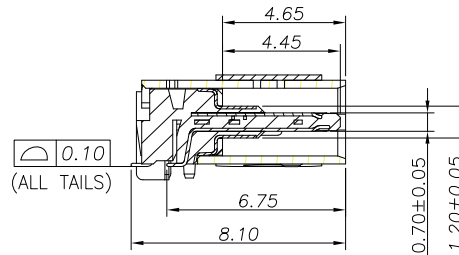
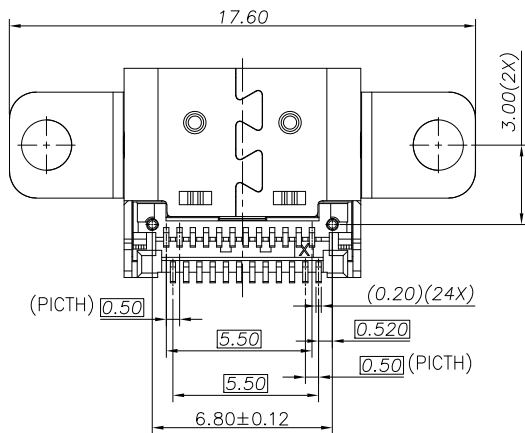
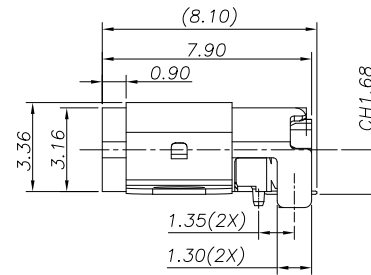
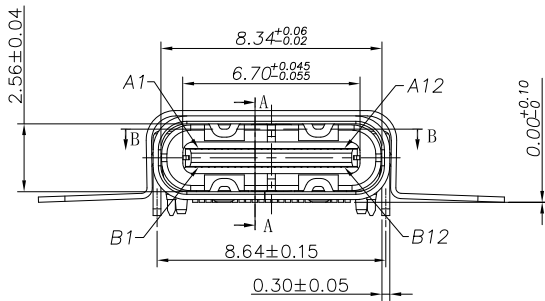
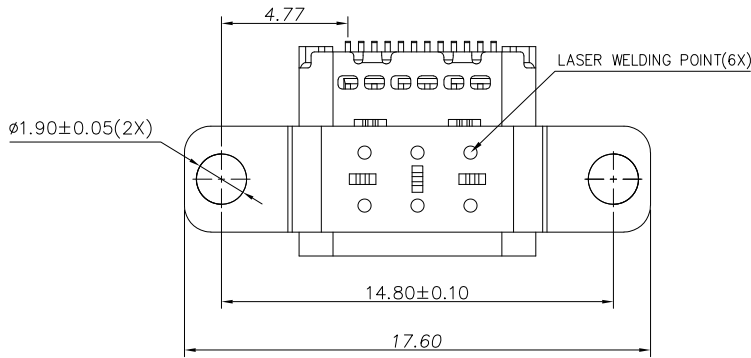
03: 3u"
15: 15u"
30: 30u"

3D VIEW

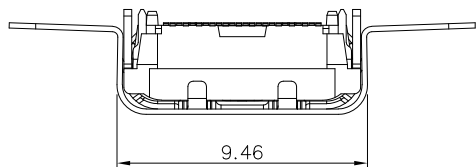


NOTE:

- MATERIAL SPECIFICATION:
 - HOUSING:HIGH TEMPERATURE RESISTANT PLASTIC,UL94 V-0.
 - CONTACTS:COPPER ALLOY
 - MID PLATE: STAINLESS STEEL
 - FRONT SHELL: STAINLESS STEEL
 - EMI PLATE: STAINLESS STEEL
 - TOP SHELL: STAINLESS STEEL
- PLATING SPECIFICATION:
 - CONTACTS:
 - Ni 50u" MIN. UNDER PLATED OVER ALL.
 - Au PLATED ON THE FUNCTIONAL AREA OF CONTACT.
 - (GOLD PLATING THICKNESS FOLLOW THE P/N)
 - PLATING SPECIFICATIONS OF THE SOLDER AREA FOLLOW THE P/N
 - FRONT SHELL&TOP SHELL:
 - Ni 30u" MIN. UNDER PLATED OVER ALL.
 - EMI PLATE:
 - CLEAR ONLY
 - MIDDLE PLATE
 - Ni 40u" MIN. UNDER PLATED OVER ALL.
 - TIN 80u" Min PLATED ON SOLDER AREA.
- MECHANICAL PERFORMANCE,
 - INSERTION FORCE: 0.5~2.0kgf.
 - REMOVAL FORCE: 0.8kgf~2.0kgf.
 - DURABILITY: 10000 CYCLES.
- ELECTRICAL PERFORMANCE,
 - CURRENT RATING:5.0A
VOLTAGE RATING:5.0V
 - LLCR:
 - VBUS & GND PINS AND OTHER PINS: 40mΩ/PIN MAX.
 - SHIELD: 50mΩ/MAX.
 - LLCR MAX. CHANGE OF ALL PINS: 10mΩ.
 - INSULATION RESISTANCE: 100MΩ MIN
 - DIELECTRIC WITHSTAND VOLTAGE,AC 100V FOR 1 MINUTE.
- ENVIRONMENTAL PERFORMANCE:
 - OPERATING TEMPERATURE: -25°C~+85°C.
 - THE PEAK TEMPERATURE ON THE BOARD SHALL
- IR REFLOW:
 - BE MAINTAINED FOR 10 SECONDS AT 260°C.
- COPLANARITY OF SMT PINS SOLDER TAIL IS 0.10 MAX.BEFORE REFLOW AND AFTER REFLOW



SECTION A-A
SCALE 1:1



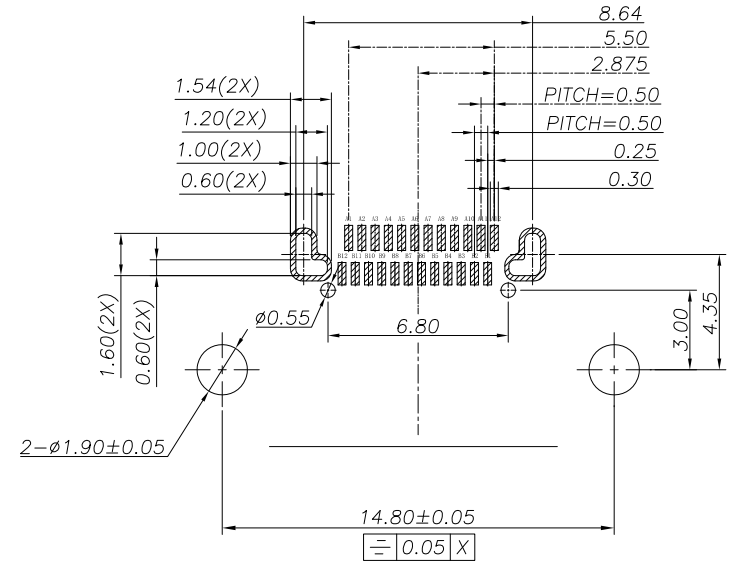
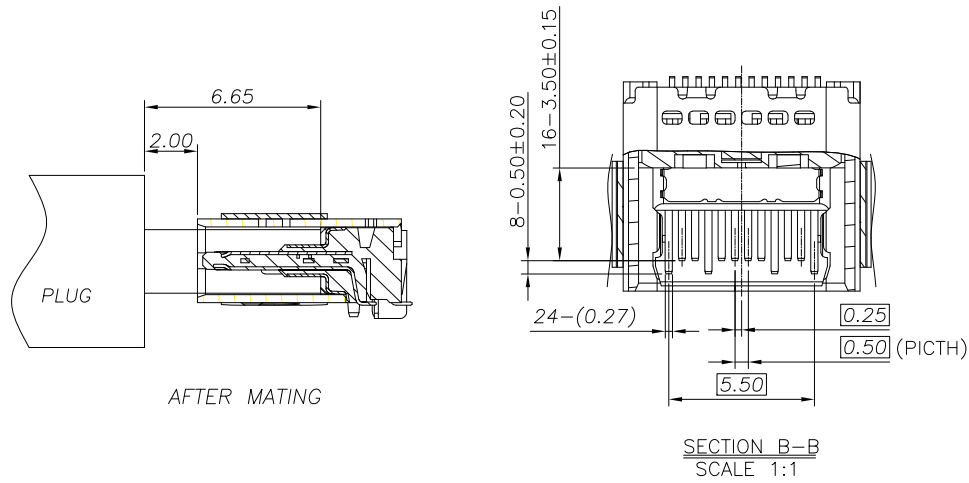
DIM	TOL
x.x	±0.30
x.xx	±0.20
x.xxx	±0.10

SUNFUN		SUNFUN TECHNOLOGY LTD			
DRAW NO.	MCCF-TS01(A1)	DATE	MATERIAL: SEE NOTES	DRAW NAME:	
DESIGN:	Johnson	04/08'20	FINISH: SEE NOTES	USB C Type CONN - FEMALE	
CHECK:	Johnson	04/08'20	FILE: MCCF-TS01(A1)	Right Angle- Dual Row SMD 24pin	
REVIEW:	Frank	04/08'20	P/N: MCCF-TS01(XXT)	2Dip with Post / Srew Wing type	
APPROVED	Frank	04/08'20	REV. A1	SCALE	MODEL: USB C TYPE CONN
				UNIT: mm	SHEET: 1/2

REV.	ECN NO.	LOCATIONS	DESCRIPTION	DATE	DESIGN
A1			MODIFY THE MOLDING PART	04/08'20	Johnson

CUSTOMER DRAWING

RoHS Compliant



USB TYPE-C PIN ASSIGNMENTS

PIN NUMBER	SIGNAL NAME	PIN NUMBER	SIGNAL NAME
A1	GND	B12	GND
A2	TX1+	B11	TX1+
A3	TX1-	B10	TX1-
A4	Vbus	B9	VBus
A5	CC1	B8	SBU2
A6	Dp1	B7	Dn2
A7	Dn1	B6	Dp2
A8	SBU1	B5	CC2
A9	Vbus	B4	VBus
A10	RX2-	B3	TX2-
A11	RX2+	B2	TX2+
A12	GND	B1	GND

DIM	TOL
x.x	±0.30
x.xx	±0.20
x.xxx	±0.10

SUNFUN		SUNFUN TECHNOLOGY LTD			
DRAW NO.	MCCF-TS01(A1)	DATE	MATERIAL: SEE NOTES	DRAW NAME:	
DESIGN:	Johnson	04/08'20	FINISH: SEE NOTES	USB C Type CONN - FEMALE Right Angle- Dual Row SMD 24pin 2Dip with Post / Srew Wing type	
CHECK:	Johnson	04/08'20	FILE: MCCF-TS01(A1)	MODEL: USB C TYPE CONN	
REVIEW:	Frank	04/08'20	P/N: MCCF-TS01(XXT)	UNIT:	SHEET:
APPROVED	Frank	04/08'20	REV. A1	mm	2/2
			SCALE		