

REV.	ECN NO.	LOCATIONS	DESCRIPTION	DATE	DESIGN
A1			UPDATE SOME DETAILS	07/13'19	Hank

ORDERING INFORMATION

MCCF - W0S1 (XX T)

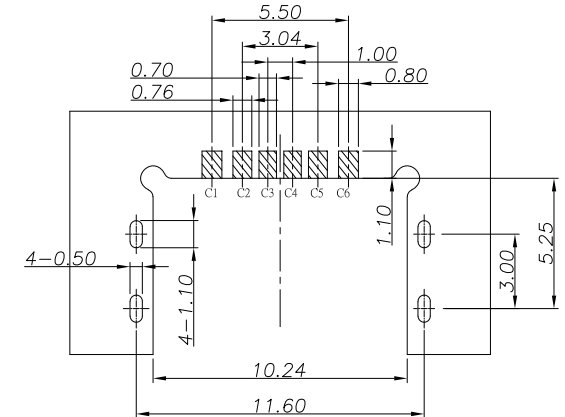
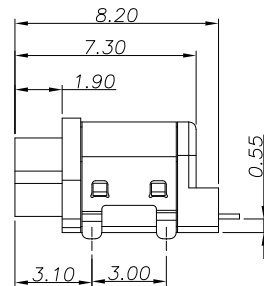
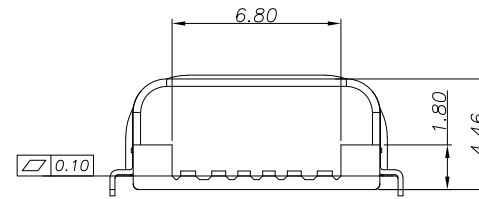
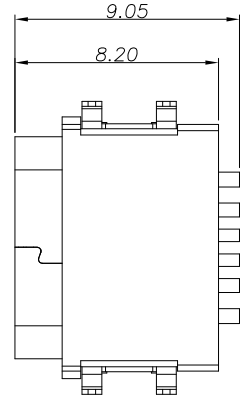
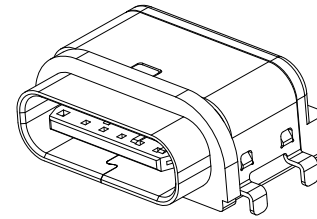
- ① **PRODUCT SERIES:**
USB C TYPE connector – Receptacle (Female) side.
- ② **ITEM NO.:**
Right Angle– Single Row 6pin
SINK 0.55/ Dip+SMD Type
Waterproof IPX7

CUSTOMER DRAWING

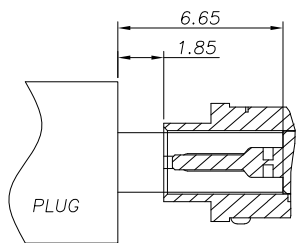
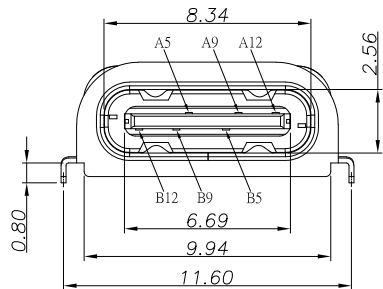
RoHS Compliant

③ **GOLD PLATING :**
01: 1u”.

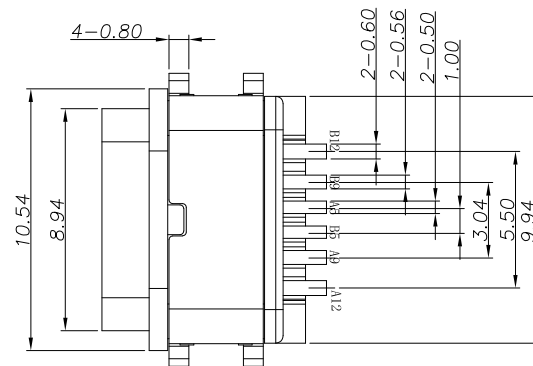
3D VIEW



RECOMMENDED P.C.B. LAYOUT



AFTER MATING



NOTES:

1. MATERIAL:
 - (1) HOUSING: HIGH TEMP plastic, UL94 V-0.
 - (2) CONTACT: COPPER ALLOY.
 - (3) MID PLATE: STAINLESS STEEL.
 - (4) SHELL: STAINLESS STEEL.
2. PLATED:
 - (1) CONTACT: GOLD ON CONTACT AREA OVER NICKEL PLEATED OVER ALL.
 - (2) SHELL: NICKEL PLATED OVER ALL.
 - (3) MID PLATE: CLEAR ONLY

PIN ASSIGNMENT:

PIN NO	A1&B12	A4&B9	A5	B5	A9&B4	A12&B1
SIGNAL NAME	GND	VBUS	CC1	CC2	VBUS	GND
PCB PAD NO.	C1	C2	C3	C4	C5	C6

DIM	TOL
x.x	±0.30
x.xx	±0.20
x.xxx	±0.10

SUNFUN		SUNFUN TECHNOLOGY LTD			
DRAW NO.	MCCF-W0S1(A1)	DATE	07/13'19	MATERIAL:	SEE NOTES
DESIGN:	Hank	07/13'19	FINISH:	SEE NOTES	DRAW NAME:
CHECK:	Hank	07/13'19	FILE:	MCCF-W0S1(A1)	USB C Type CONN - FEMALE
REVIEW:	Frank	07/13'19	P/N:	MCCF-W0S1(XXT)	Right Angle/ Single Row 6pin/ Sink0.55/ Waterproof IPX7
APPROVED	Frank	07/13'19	REV. A1	SCALE	MODEL: USB C TYPE CONN
					UNIT: mm
					SHEET: 1/1

