

REV.	ECN NO.	LOCATIONS	DESCRIPTION	DATE	DESIGN
A0			NEW RELEASE	06/01'19	Hank

**ORDERING INFORMATION**

**MCCF - W1S3 (XX T)**

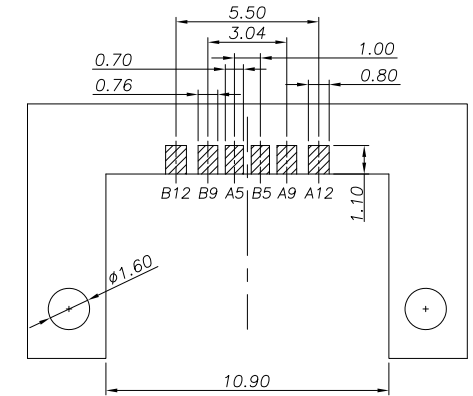
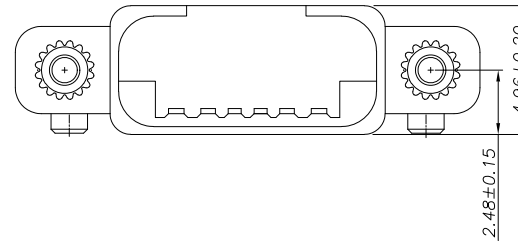
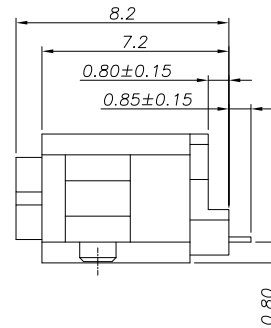
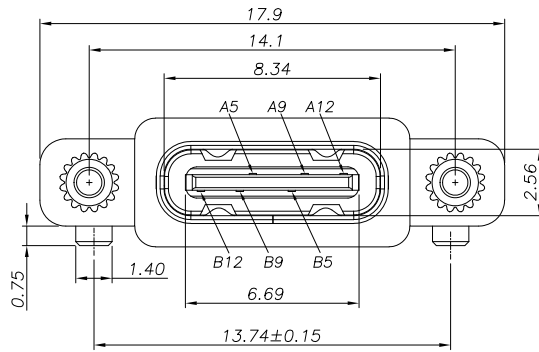
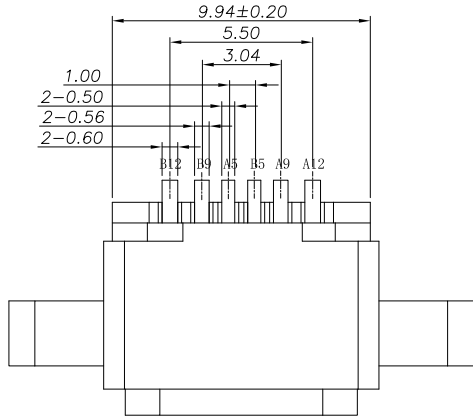
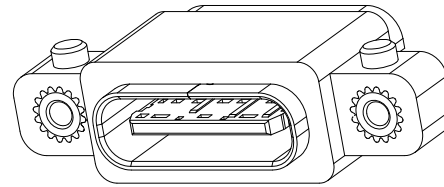
- ① **PRODUCT SERIES:**  
USB C TYPE connector – Receptacle (Female) side.
- ② **ITEM NO.:**  
Right Angle– Single Row 6pin  
Sink Type/ Dip+SMD Type  
With Nut/ Waterproof IPX7

**CUSTOMER DRAWING**

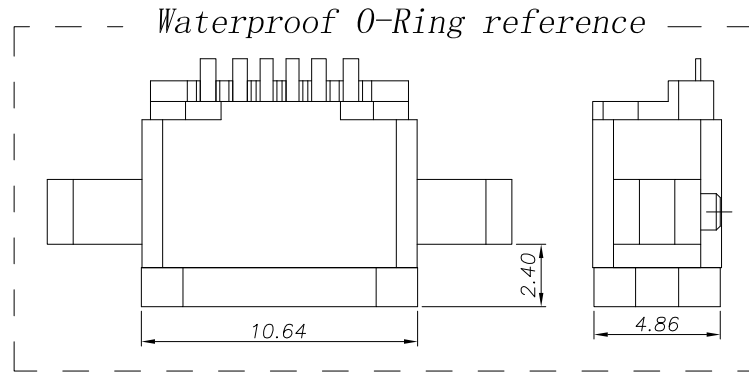
**RoHS Compliant**

③ **GOLD PLATING :**  
01: G/F.

**3D VIEW**



RECOMMENDED PCB LAYOUT



*Waterproof O-Ring reference*

**NOTES:**

1. MATERIAL:
  - (1) HOUSING: HIGH TEMP plastic, UL94 V-0.
  - (2) CONTACT: COPPER ALLOY.
  - (3) MID PLATE: STAINLESS STEEL.
  - (4) SHELL: STAINLESS STEEL.
2. PLATED:
  - (1) CONTACT: GOLD ON CONTACT AREA OVER NICKEL PLEATED OVERALL.
  - (2) SHELL: NICKEL PLATED OVERALL.
  - (3) MID PLATE: CLEAR ONLY

**PIN ASSIGNMENTS**

PIN NO.	A5	A9	A12	B12	B9	B5
SIGNAL NAME	CC1	VBUS	GND	GND	VBUS	CC2

DIM	TOL
X.X	±0.30
X.XX	±0.20
X.XXX	±0.10

SUNFUN		SUNFUN TECHNOLOGY LTD			
DRAW NO.	MCCF-W0S3(A0)	DATE	06/01'19	MATERIAL:	SEE NOTES
DESIGN:	Hank	06/01'19	FINISH:	SEE NOTES	DRAW NAME:
CHECK:	Hank	06/01'19	FILE:	MCCF-W0S3(A0)	USB C Type CONN – FEMALE
REVIEW:	Rui	06/01'19	P/N:	MCCF-W0S3(XXT)	Right Angle-Single Row 6pin/ Sink type
APPROVED	Rui	06/01'19	REV. A0	SCALE	Dip+SMD Type/ With Nut/ Waterproof
					MODEL: USB C TYPE CONN
					UNIT: SHEET:
					mm 1/1