

REV.	ECN NO.	LOCATIONS	DESCRIPTION	DATE	DESIGN
A1			REVISED SOME DETAILS	02/07'18	Jack

ORDERING INFORMATION

PW48MA- VD 10(6)

① ② ③

① **PRODUCT SERIES**

Pogo connector –
Pitch 2.54mm / Slime Male.

CUSTOMER DRAWING

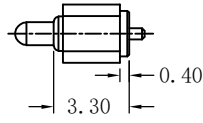
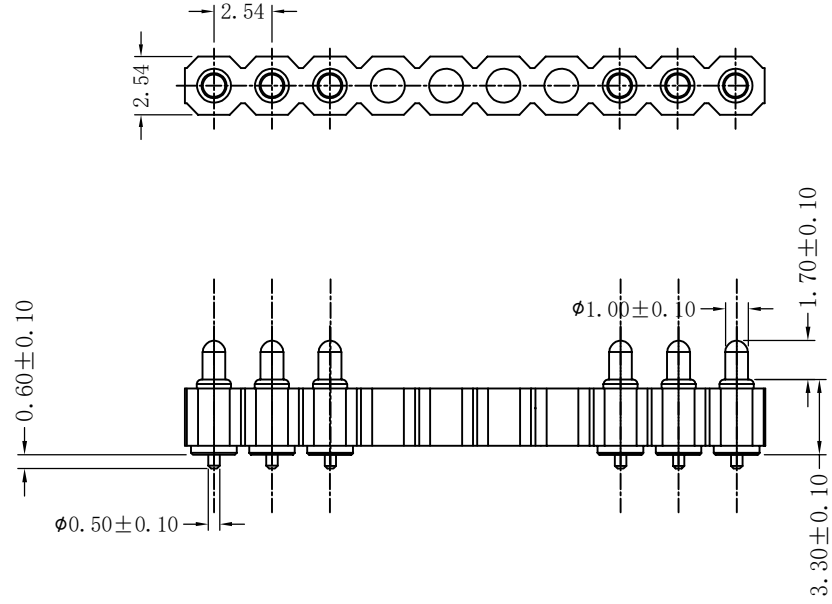
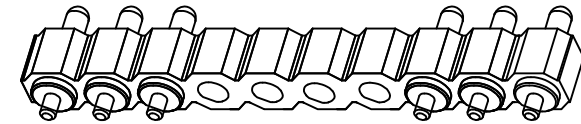
RoHS Compliant

③ **PIN NO. :**
6PIN WITH HOUSING 10.

② **SPEC NOTES.:**

Straight DIP type.

3D VIEW



NOTES:

1.MATERIAL:

Insulator: High Temperature Thermoplastic,
UL 94V-0.
Contact: Copper Alloy.

2.PLATING:

Contact: Plated 50u" Ni over all;
Plated 3u"Au flash over all.

3.Electrical:

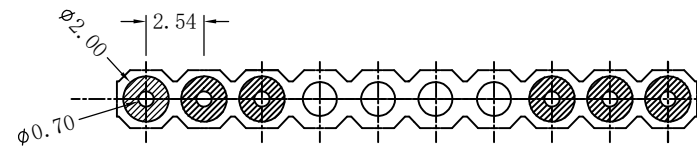
Current Rating :2.0A AC/DC max.
Voltage Rating :12V AC/DC.
Ambient Temperature Range :-20°C~+60°C.
Ambient Humidity Range :95% R.H. Max.
Contact Resistance: 30m Ω max.
Insulation Resistance:1,000MΩ min/500VDC.

4.Mechanical:

Contact force: 60g+/-20g at 1.0mm working stroke.
Full stroke:1.40mm.
Durability: 20,000 cycles.

5.Standard tolerances are:

Diameters:+/-0.05mm.
Lengths:+/-0.15mm.



Recommended PCB Layout
Layout tolerance: ±0.05mm

DIM	TOL	DIM	TOL
X.X	±0.30	X.X'	±3.0'
X.XX	±0.20	X.XX'	±2.0'
X.XXX	±0.10	X.XXX'	±1.0'

SUNFUN		SUNFUN TECHNOLOGY LTD			
DRAW NO.	PW48MA-VD10(6)(A1)	DATE	MATERIAL:	SEE NOTES	DRAW NAME:
DESIGN:	Jack	02/07'18	FINISH:	SEE NOTES	POGO PIN CONN - MALE(SLIM)
CHECK:	Jack	02/07'18	FILE:	PW48MA-VD10(6)(A1)	PITCH 2.54/ STR DIP TYPE/
REVIEW:	Rui	02/07'18	P/N:	PW48MA-VD10(6)	6PIN WITH HOUSING 10
APPROVED	Rui	02/07'18	REV.	A1	MODEL: POGO PIN CONN
			SCALE		UNIT: mm
					SHEET: 1/1