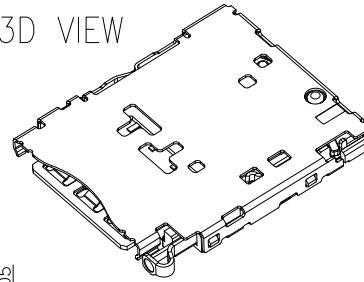


REV.	ECN NO.	LOCATIONS	DESCRIPTION	DATE	DESIGN
A2			MODIFY PIN DEFINE	05/21'19	John

3D VIEW



ORDERING INFORMATION

SMJN- S05 (XX T)

① ② ③

① **PRODUCT SERIES:**
Nano-SIM CARD SOCKET-
TRAY TYPE.

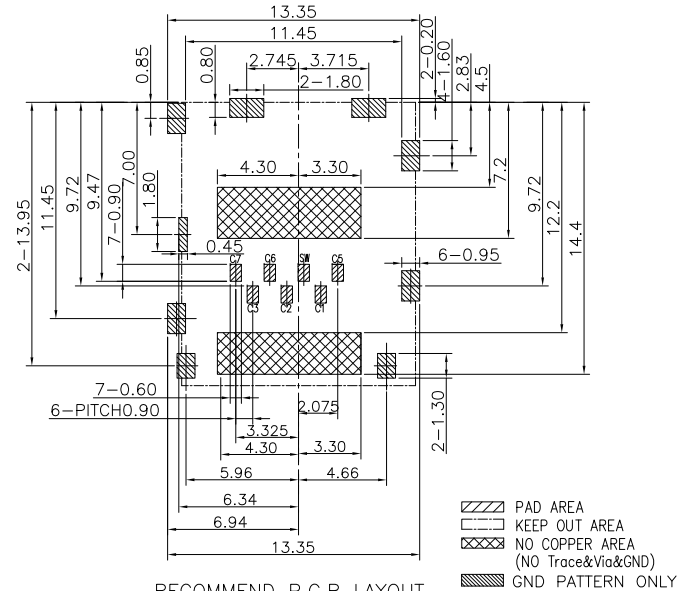
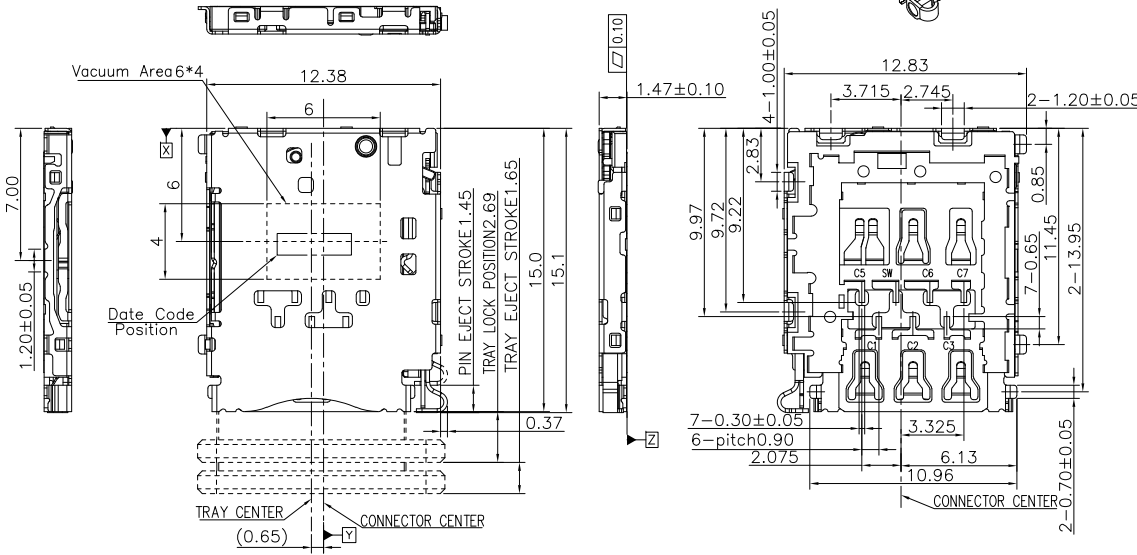
② **ITEM NO.:**
6+1PIN/ 1.50H.

CUSTOMER DRAWING

RoHS Compliant

③ **GOLD PLATING**

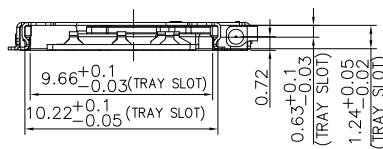
01: G/F,
05: 5u",
10: 10u",
15: 15u",
30: 30u".



RECOMMEND P.C.B LAYOUT
(General tolerance ±0.05)

NOTES:

- MATERIAL:**
1-1. HOUSING: LCP, HIGH TEMP, BLACK COLOR.
1-2. TERMINAL: COPPER ALLOY.
1-3. SHELL: STAINLESS STEEL.
- FINISH:**
2-1. TERMINAL: GOLD ON CONTACT AREA AND G/F ON SOLDER TAILS OVER NICKEL PLATED OVERALL.
2-2. SHELL: G/F PLATED ON SOLDER TAIL OVER NICKEL PLATED OVERALL.



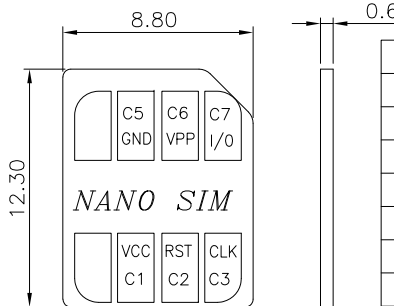
COMPOSITION OF DETECTION

CARD DETECT(SW)

C5 SW

CARD DETECTION/SWITCH

CARD INSTALLATION: ON
NON CARD: OFF



SIM pin Assignment	
PIN#	Name
C1	VCC
C2	RST
C3	CLK
C5	GND
C6	VPP
C7	I/O

DIM	TOL	DIM	TOL
X.X	±0.30	X.X'	±3.0'
X.XX	±0.20	X.XX'	±2.0'
X.XXX	±0.10	X.XXX'	±1.0'

SUNFUN		SUNFUN TECHNOLOGY LTD			
DRAW NO.	SMJN-S05(A2)	DATE	MATERIAL: SEE NOTES	DRAW NAME:	
DESIGN:	John	05/21'19	FINISH: SEE NOTES	Nano-SIM CONN, Tray Type 6+1PIN, 1.50mm Height	
CHECK:	John	05/21'19	FILE: SMJN-S05(A2)	MODEL: NANO-SIM CONN	
REVIEW:	Eric	05/21'19	P/N: SMJN-S05(XXT)	UNIT: mm	SHEET: 1/1
APPROVED	Eric	05/21'19	REV. A2	SCALE	

NANO-SIM CARD